

CONFLUENT PLATFORM

GUI-driven management and monitoring

[Confluent Platform](#) offers the simplest way to manage and monitor Apache Kafka®. Control Center is a web-based GUI to understand Kafka, meet SLAs and control key components of the platform.



Accelerate application development and integration



Centralize Kafka management operations



Adhere to established event streaming SLAs



Simplify Kafka troubleshooting

Why GUI-driven management and monitoring?

Given the rising popularity of Kafka, combined with the inherent complexity of managing a highly distributed system, Kafka technical expertise is scarce and in [high demand](#). So, how do you enable different types of users to be successful?

- Operators — When looking to manage Kafka at large enterprise scale, you need a simple way to manage multiple Kafka clusters at once, and to parse through all the metrics to meet SLAs around availability, performance and security.
- Developers — Developers need an intuitive way to understand and manage messages, topics, schemas, connectors and stream processing apps within Kafka, all of which are needed to solve business problems.

Confluent Platform dramatically simplifies the way that enterprises manage and monitor Kafka clusters at large scale through the use of an expertly-designed GUI.

Features



Control Center

Control Center is a web-based graphical user interface with expertly-designed dashboards to enable centralized management and monitoring of key components of the platform, including clusters, brokers, schemas, topics, messages, connectors, ksqlDB queries, security, replication and more.



“Control Center gives you full visibility of all messages as they move through the system, such as what the consumers and the producers are doing and whether they’re there or not. This is the number one question we get as a platform support team.”

Head of Engineering, Enterprise Cloud, Royal Bank of Canada

Solution

Accelerate application development and integration

Manage messages, topics and schemas

Control Center delivers a Kafka UI that allows you and your developers to observe and control messages, topics and Schema Registry, all in a centralized way.

Manage Kafka Connect connectors in one place

Control Center provides centralized management for all your connectors built on the Kafka Connect framework.

Manage ksqiDB, the event streaming database

Control Center integrates with ksqiDB and allows you and your developers to view a summary of all ksqiDB clusters, develop and run queries, and support multiple ksqiDB clusters at a time.

Adhere to established event streaming SLAs

Track and ensure message delivery

Control Center provides the only solution designed to track the key performance indicators for Apache Kafka. Use intuitive charts to track and receive alerts for consumer lag and production and consumption metrics such as throughput, request latency, and failed requests.

Monitor and optimize system health

Control Center offers a global view of the most critical parameters around health, availability, and performance for the entire platform. Gain visibility into the Broker and ZooKeeper uptime, under replicated partitions, out of sync replicas, and disk usage and distribution.

Monitor multi-site deployments

Control Center integrates with Multi-Region Clusters and Replicator, so that you can monitor replication tasks directly from the GUI, allowing you to track key metrics, such as throughput and lag.

Centralize Kafka management operations

Manage security scalably

Simplify security management for the entire organization by integrating RBAC to Control Center. This allows you to view and manage access permissions for yourself and others.

Configure brokers dynamically

Simplify at-scale operations using a centralized dashboard to view broker configurations and modify them dynamically without resorting to rolling restarts.

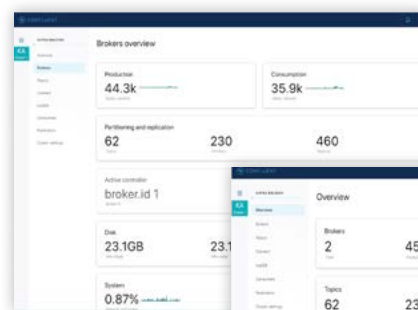
Manage multiple clusters centrally

Centralize operations not only for multiple Kafka clusters, but also for multiple Connect, ksqiDB and Schema Registry clusters.

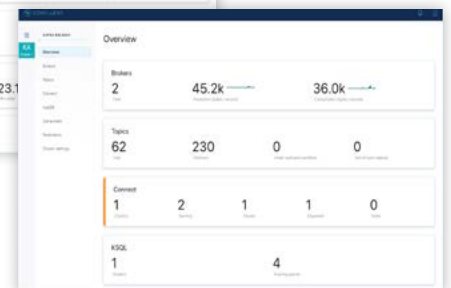
Simplify Kafka troubleshooting

When occasionally things go wrong, you need to perform root-cause analysis as fast and easy as possible. Control Center allows you to correlate issues faster by viewing the most important topic metrics in a single page and simplify debugging by browsing for specific messages by partition offset or timestamp.

Broker overview



Cluster overview



Confluent Platform. Enterprise event streaming platform built by the original creators of Apache Kafka. For more information, please visit confluent.io. To contact us, visit confluent.io/contact. For detailed product specifications, please refer to our [documentation](https://confluent.io/documentation).